

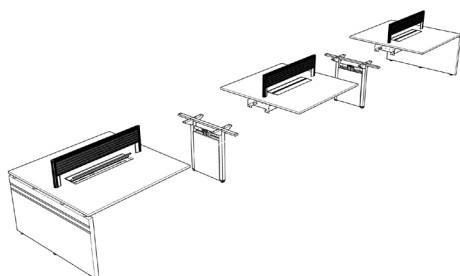


A Global Mobilinea apresenta a linha Versatil. Crie seu ambiente, de uma maneira simples e ágil, contando com diversas opções de configuração e acessórios. Enfim um sistema versátil!

MODELOS

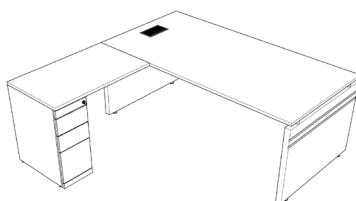


DIMENSÕES E ESPECIFICAÇÕES



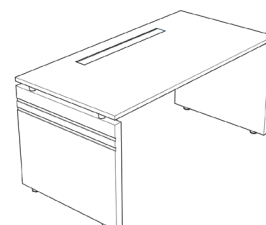
PLATAFORMA

L = 1200 - 2000 P = 1400 - 1600 H = 720



VERSATIL LIGHT

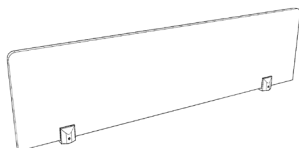
L = 1600 - 1800 P = 800 H = 720



MESA RETANGULAR

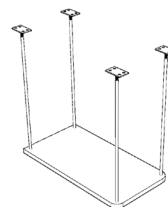
L = 1400 - 1600 P = 600 - 800 H = 720

ACESSÓRIOS



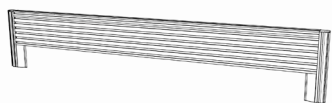
MDP/VIDRO

L = 1480 P = 18 H = 290 mesa 160
L = 1280 P = 18 H = 290 mesa 140



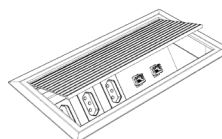
SUPORTE DE CPU

L = 260 P = 500 H = 500



DIVISOR DIET

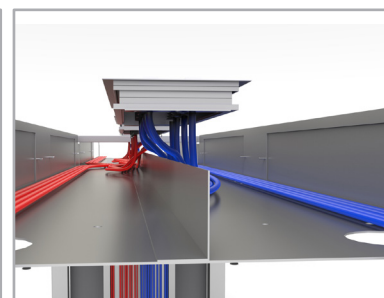
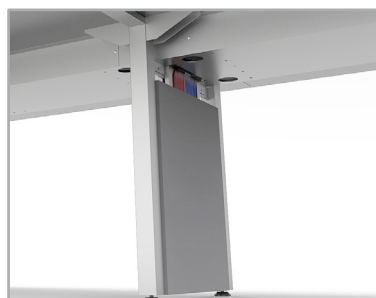
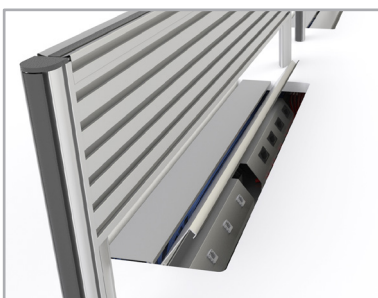
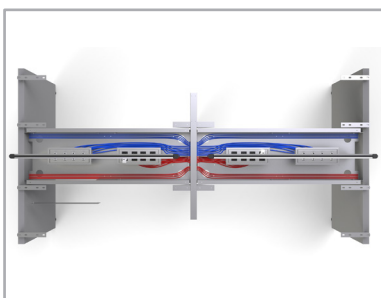
L = 1480 P = 18 H = 290 mesa 160
L = 1280 P = 18 H = 290 mesa 140



CAIXA DE PLUGAGEM

GRANDE: 4 TOMADAS + 4 RJ
MÉDIA: 3 TOMADAS + 2 RJ
PEQUENA: 2 TOMADAS + 2 RJ

DETALHES



Fábrica - Jundiaí - São Paulo
Av. das Indústrias, 121
Distrito Industrial, Jundiaí - SP
CEP. 13213-100
Tel. 55 11 4492 - 6859
www.globalmobilinea.com.br

Vendas - São Paulo - Brasil
Av. Eng.º Antônio Jovino, 220
Vila Andrade, São Paulo - SP
CEP. 05727-220
Tel. 55 11 3065 - 0947
www.globalmobilinea.com.br

